



Conclusions

Global Flood Working Group



Global Flood Monitoring and Modelling Initiative

- **Enlarged participation: VHR + new groups**
- **Many systems were developed further in a coordinated way**
- **2011 floods were well covered, possibility for further integration**

Looking ahead

- **General agreement to visually integrate systems**
- **Historical flood record: data**
- **Validation studies 2012**
- **“Operational” support 2012**



Validation activities

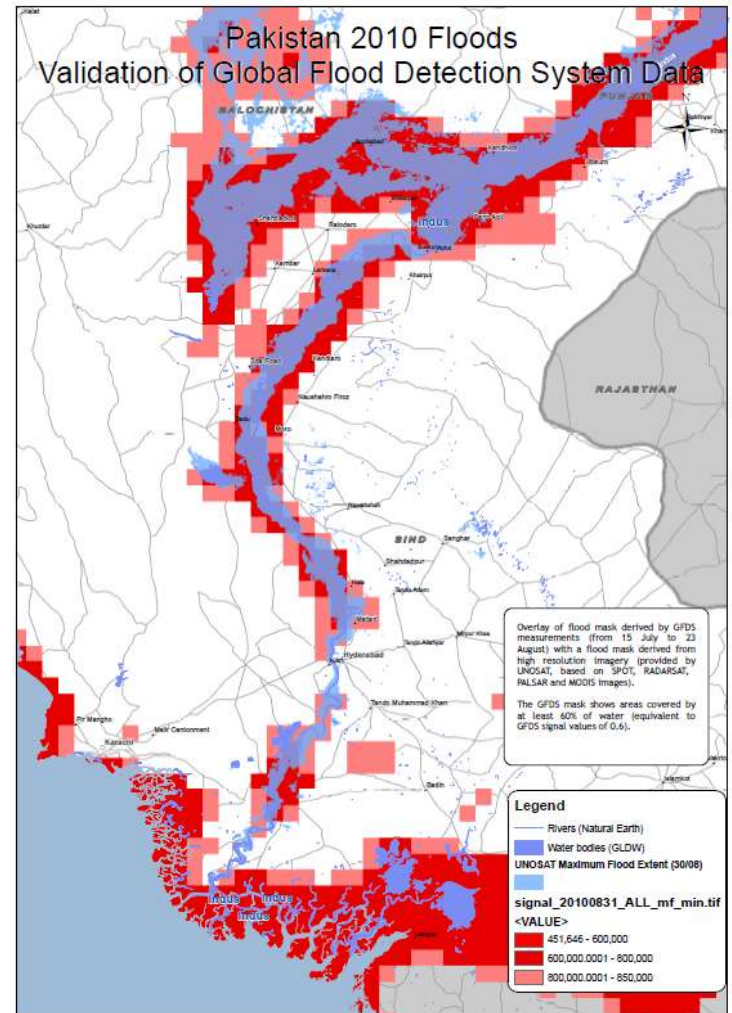
2012 Case studies



Brazil, June



Pakistan, August

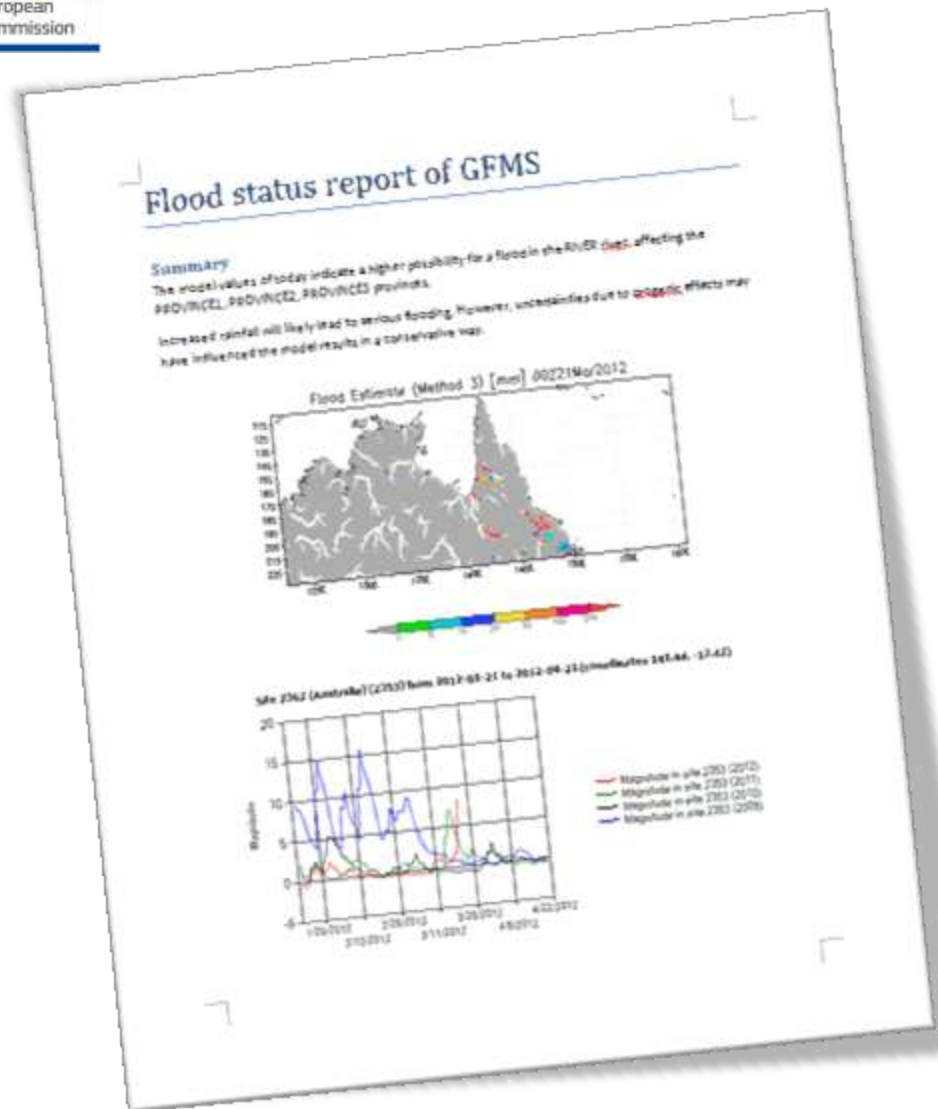


Methodology

- **Store data**
- **Store timing**

- **Create daily interpretation brief**

Internal to the group
Blog, email or Google
doc





Outcomes

- **Cross validation**

POD

FAR

Map accuracy

Limitations / strengths

- **Methodology for integration**

Ideal composed product

Overlap → combination

Gaps → new developments



“Operational” support

Support to operational responders



Operational support

Not yet an ideal set of products

- **But some information is better than none**

Triggers

- **Coordinator (GDACS sub-group)**
- **Dropbox**
- **Aggregated feeds (UNOSAT, DFO, WFP...)**

Potential products of help to users

- **GIS data**
- **Visualization: analytical tool**
- **Joint report on an event**



Access

- **Links to data → Flood Initiative Portal**
- **Some links in GDACS Platform (for events)**

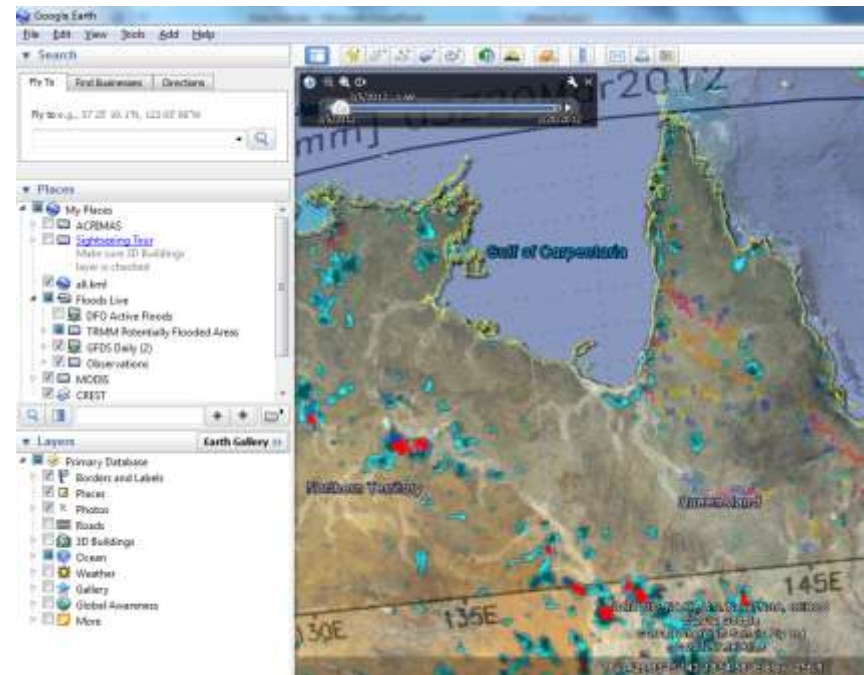
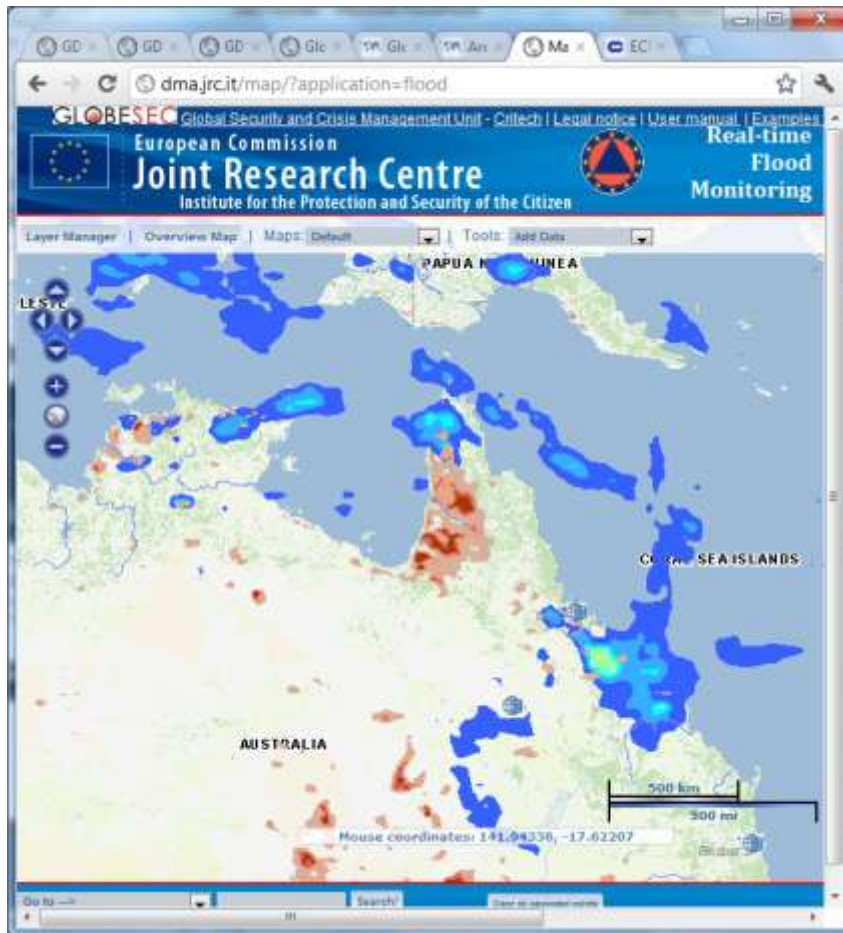
Interpretation

- **Guidelines to use and render the data**
- **Limitations and disclaimers**

Use restrictions in derived products

- **Acknowledgements, disclaimers**
- **Approval with source**

Visualization





System	Contact point	Content
GFDS	Tom / Bob B.	Flood magnitude image Time series of discharge
GFMS	Bob A.	Relative routed runoff (>95 th percentile) of today and yesterday
MODIS RT	Fritz / Bob B.	10 day composite MFW Daily MFW
Deltares	Nicki	X day composite of 70%/70% water mask
ECMWF	Florian	EFI of today and yesterday
Ithaca	Adriana	Basins currently in flood alert
GMES	Christina	Detailed flood vectors for ongoing events
UNOSAT	Wendy	Detailed flood vectors for ongoing events
NASA EO1	Stu	Latest imagery
UW	Bart	Current soil moisture
GloFAS	Jutta	Alert status of river segments

Visualization



System	Contact point	Format
GFDS	Tom / Bob B.	WMS, KML
GFMS	Bob A.	Image 3600x1800 WGS84 today.png
MODIS RT	Fritz / Bob B.	WMS, KML
Deltares	Nicki	WMS, KML
ECMWF	Florian	Image today.png, yesterday.png
Ithaca	Adriana	WMS
GMES	Christina	KML of ongoing events
UNOSAT	Wendy	KML of ongoing events
NASA EO1	Stu	WMS
UW	Bart	Image today.png
GloFAS	Jutta	WMS, KML



Major events

- **Requests**

global_floods@jrc.ec.europa.eu

Individual requests

- **Voluntary contributions**

- **Similar format as validation reports (1 page)**



Conclusions



Global Flood Monitoring and Modelling Initiative

- **Enlarged participation: VHR + new groups**
- **Many systems were developed further in a coordinated way**
- **2011 floods were well covered, possibility for further integration**

Looking ahead

- **General agreement to visually integrate systems**
- **Historical flood record**
- **Validation studies 2012**
- **“Operational” support 2012**



Minutes of the meeting (Tom + all)

System adaptations

- **Specifications (Tom)**
- **Detailed action plan**

According to available resources

Coordination activities

- **2 validation studies**

June, August

- **“Operational support”**

Ad hoc

Web platform (coordination)

- **JRC web platform: dedicated website**
- **Dropbox**

Links to data sources

Univ. Kansas: examples

Swiss Re Global Flood Zones

Publications

- **Single publication on validation studies**
- **Special Issue: Natural Hazards**
- **EOS, Nature**

Next meeting



Next meeting

- **Boulder**
- *Maryland*
- **Oklahoma**

- Funding for travel
- 3 days
- First announcement:
November